

BASIC LIGHT

Fully adjustable fall-arrest harness with a rear dorsal attachment point.

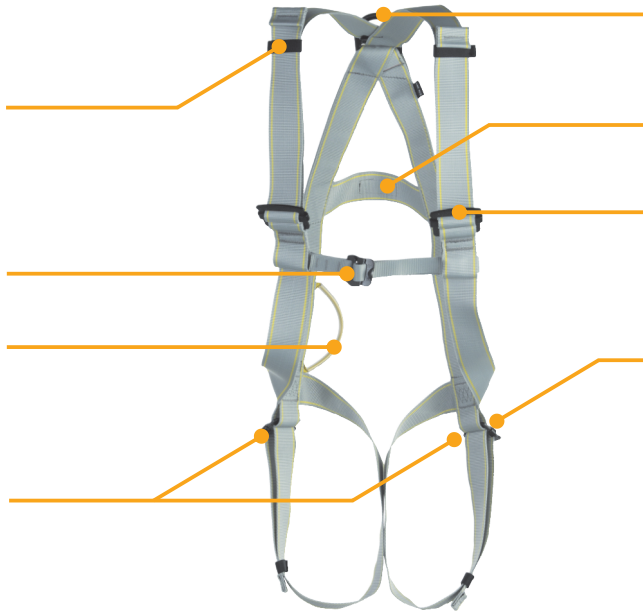
DESCRIPTION

Rubber band for free ends of adjustable straps.

Chest connection with patented Rock&Lock buckle

Gear loop with load of 5kg

All steel components finished with E - coating for higher corrosion resistance



Flat rear attachment point does not affect comfort when wearing the backpack or breathing apparatus

Different colour of rear webbing for each size (S/M/L- grey, XL/XXL-yellow)

Buckle Easy-Lock enables simplify handling

Buckle Easy-Lock enables simplify handling

KEY PROPERTIES

- Lightweight and simple work harness
- Comfortable during a work
- Easy to adjust, easy to put on and off

STANDARDS

CE 1019
EN 361:2002

FEATURES



S/M/L – 760 g/26,6 oz
XL/XXL – 810 g/28,5 oz



3 YEARS guarantee

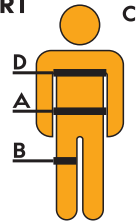


made in Czech republic

MATERIAL COMPOSITION

- 34 % stainless steel
- 50 % PES
- 10 % PAD
- 6 % polyethylene

SIZE CHART

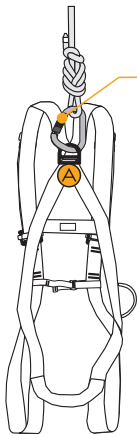


	S/M/L	XL/XXL
A [cm/in]	UNI	UNI
B [cm/in]	UNI	UNI
C [cm]	150–185	180–210
D [cm]	UNI	UNI

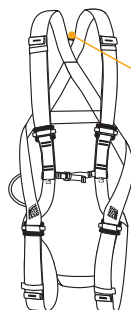
A - waist circumference; B- a circuit leg loops
C - body height; D - chest circumference

TECHNICKÁ DATA

PPE against falls from a height.



connector triplelock

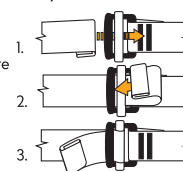


dorsal rear D ring attachment point according to EN 361 labeled with A

Traceability label

- | | | |
|---|----------------|--------------------------------|
| 1 | 001/9999/12/17 | 1 – unique No. |
| 2 | BASIC LIGHT | 2 – batch No. |
| 3 | SIZE: S/M/L | 3 – month /year of manufacture |
| 4 | | 4 – model |
| 5 | | 5 – size |
| 6 | EN 361:2002 | 6 – fall-arrest work harness |
| 7 | CE 1019 | 7 – conformity marking |
| 8 | | 8 – no. of notified body |

Easy-Lock buckle



Rock & Lock buckle

